



SHWETA PAINTS

On-Time In Budget. Guaranteed To Last.



LET OUR COLOURS REFLECT YOUR EMOTIONS

At SHWETA PAINT, we believe that our products give you the right platform to express your emotions, Because our range of shades come in every hue to make your life a brighter place.

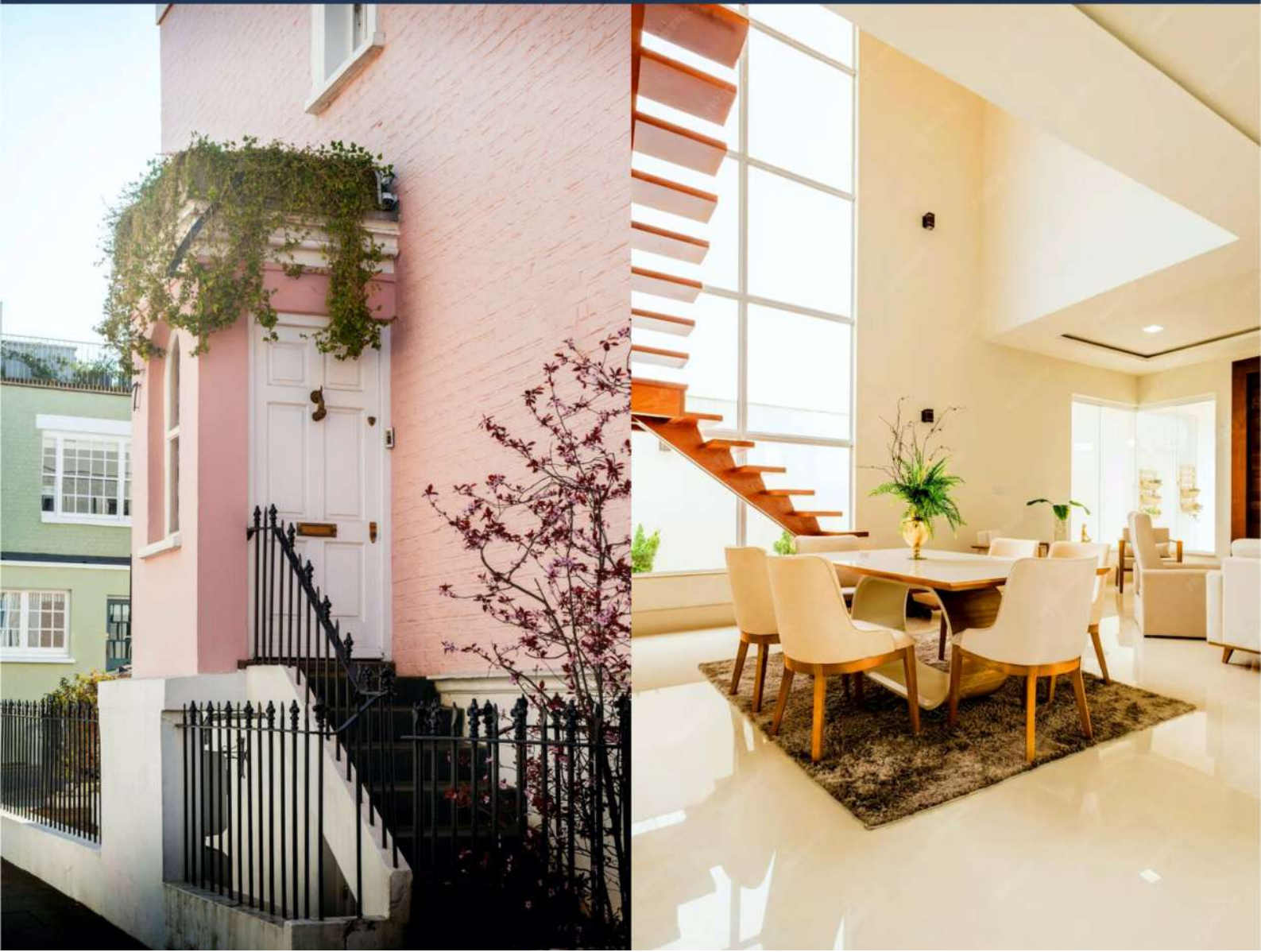
Manufactured at our state-of-the-art facility, SHWETA PAINT gives you the quality that you can expect from the best. What's more, our technology ensures that our premium paints last long and retain colour to give your walls a lasting sheen.

The SHWETA PAINT technology we've developed, protects the environment just as well as walls. It's special non-toxic properties eliminate harmful fumes, so that you and the environment stay safe and healthy. With us you get a thicker, more flexible layer of paint. delivering extreme protection from cracking peeling, blistering, fading and flaking.

Guaranteed to outshine any competition, SHWETA PAINT are easy on your pocket and the environment with the lowest VOC counts in the industry. We also ensure that our paints are tested to deliver high quality smoothness across uneven surfaces and can withstand the onslaught of dirt rough weather.

And there's more.

SHWETA PAINT is founded by people with decades of experience in the field. So while the products are thought through with respect to market requirements, our ability to provides a high level of service will differentiate us. Infact we believe that a sale is just the beginning - we cam met your requirement across your applications including interior, exterior, texture and more.



EXTERIOR EMULSION PAINTS

REAL EXTERIOR EMULSION PAINT

High durable dirt resistant Exterior Emulsion formulated with acrylic emulsion polymer based on advance technology. Its unique cross linking feature contributes to ultra resistant and long lasting durability. formulated especially for use as Decorative and Protective Exterior

Features: 1) Ultra durable and long lasting finish Smooth finish with high sheen. 3) Excellent Dirt Pick up Resistance. 4) Higher Film Thickness. 5) Good Elastomeric Property. 6) Good Crack Bridging Property. 7) Excellent adhesion and Washability. 8) Excellent Water Repellency. 9) Algal & Fungal resistance. 10) Ultraviolet light resistance. 11) Good Water resistance. 12) Easy Application. 13) Easy soap & water clean up.

Thinning Ratio : 40-45% By volume. Drying time is 6-8 hours. Spreading Capacity : 55-65 sq.ft./litre/2coats.



REAL DAMP PROOF ACRYLIC PAINT

Real Damp Proof acrylic Paint is formulated specially for modern days residential and commercial complexes who would like to provide additional protection from dirt, fungus and UV rays for their external walls to remain aesthetically fresh & beautiful for years.

Features: 1) Durable & long lasting 2) Soothing & slight sheen finish 3) Excellent adhesion & washability 4) UV resistant 5) Excellent dirt resistance property 6) Fungus & moisture resistant 7) Ease of application.

Thinner: Water, Thinning ratio: ratio:15-20% by volume. Drying time : 4-6 hours. Spreading capacity: 40-50 Sq.ft./litre/2 coats.



REAL 100% ACRYLIC PAINT

Real acrylic emulsion 100% pure is formulated specially for modern days residential and commercial complexes who would like to provide additional protection from dirt, fungus and UV rays for their external walls to remain aesthetically fresh & beautiful for years.

Features: 1) Durable & long lasting 2) Soothing & slight sheen finish 3) Excellent adhesion & washability 4) UV resistant 5) Excellent dirt resistance property 6) Fungus & moisture resistant 7) Ease of application.

Thinner: Water, Thinning ratio: Ratio:40-50% by volume. Drying time : 4-6 hours. Spreading capacity: 50-60 Sq.ft./litre/2 coats.



REAL ULTIMA PURE ACRYLIC PAINT

Flexon Exterior Emulsion is a water based, pure acrylic, durable and long lasting elastomeric finish that gives a satin like appearance to the walls exterior.

Features: 1) Durable and long lasting flexible elastic finish 2) Fungicide resistant 3) Bacteria resistant 4) Excellent adhesion 5) Water resistant Easy application.

Thinning Ratio 40-50% of water as per the application requirement. Drying time is 6-8 hours. Spreading capacity: 50-55sq.ft./litre/2 coats by trowel and 1.5-2sq.ft./kg/coat by spray.



REAL ULTIMA PROTECT ACRYLIC PAINT

Real Ultima Protect acrylic Paint is formulated specially for modern days residential and commercial complexes who would like to provide additional protection from dirt, fungus and UV rays for their external walls to remain aesthetically fresh & beautiful for years.

Features: 1) Durable & long lasting 2) Soothing & slight sheen finish 3) Excellent adhesion & washability 4) UV resistant 5) Excellent dirt resistance property 6) Fungus & moisture resistant 7) Ease of application.

Thinner: Water, Thinning ratio: ratio:40-50% by volume. Drying time : 4-6 hours. Spreading capacity: 30-35 Sq.ft./litre/2 coats.



INTERIOR EMULSION PAINTS

REAL INTERIOR EMULSION PAINT

Real Interior Emulsion paint is a low VOC, no odour emulsion which can withstand repeat washing and retain a beautiful finish. It outperforms major leading brands in washability and finish retention. Most stains wipe away easily with water no scrubbing or harsh chemicals are required. It excellent properties like the easy to clean feature, smooth sheen and ability to mask blemishes gives your home a stylish inviting look. It adheres to all green environment regulations and guidelines.

Features:1) Durable 2) Smooth finish 3) Easy to clean 4) Stain-resistant 5) Smooth sheen

Thinning Ratio : 40-50% per liter. Drying time is 3-4 hours. Spreading capacity:105-110 sq.ft./litre/2 coats.



REAL PREMIUM ACRYLIC PAINT

Real Premium Acrylic Paint is specially formulated acrylic copolymer based primer for buildings where primary and secondary efflorescence are being observed. It seals the affected area by creating a layer and also prevents from further salt crystallization on the surface. It also prevents microorganism and hence its fungus/algae & bacteria resistant. It has also an excellent opacity and whiteness which helps to enhance the overall performance of the top coat.

Features: 1) Technically superior quality primer 2). Prevents surface from primary & secondary efflorescence 3) Excellent sealing property 4) Funs, alkali & bacteria resistant, 5) Resistant to chalking.

Thinner: water, Thinning ratio: 40-50% by volume, Drying time : 3-4 hours, Spreading capacity: 80-90 sq.Ft./litre/coat



PREMIUM ACRYLIC DISTEMPER

Premium Acrylic Distemper is a High quality water based Exterior primer based on modified acrylic emulsion. It has excellent opacity & whiteness, which improves the appearance of top coat. It is reinforced with inert pigments & extenders, which imparts good sealing properties. The results dry dry film is tough, flexible, resistant to water, alkali and chalking. It is having excellent covering capacity.

Features: 1) High quality Exterior primer 2) Smooth with Matt finish 3) Excellent adhesion and Sealing properties 4) Fungus and Bacteria resistant 5) Alkali resistance 6) Resistance to Chalking 7) Excellent Covering capacity 8) Easy application

Thinner: Water Thinning Ratio:60-65% By Volume Drying time:3-4 hours Spreading capacity:85-100 sq.ft./litre/Coat



WATER BASED PRIMERS

REAL INTERIOR EXTERIOR PRIMER

It is specially formulated acrylic copolymer based primer for building where primary and secondary efflorescence are being observed. It seals the affected area by creating a layer and also prevents from further salt crystallization on the surface. It also prevents microorganism and hence it fungus & bacteria resistant. It has also an excellent opacity and whiteness which helps to enhance the overall performance of the top coat.

Features: 1) Technically superior quality exterior primer 2) Prevents surface from primary & secondary efflorescence 3) Excellent sealing property 4) Fungus, alkali & bacteria resistant, 5) Resistant to chalking.

Thinner: Water, thinning ratio: 40-50% by volume, Drying time 3-4 hours, Spreading capacity: 80-90 sq.ft./litre/coat.



REAL EXTERIOR PRIMER

This is a high quality water based Exterior primer based on modified acrylic emulsion, It has excellent opacity & whiteness, which improves the appearance of top coat. It is reinforced with inert pigments & extenders. which imparts good sealing properties. The resultant dry film is tough, flexible, resistant to water, alkali and chalking. It is having excellent covering capacity.

Features: 1) High quality Exterior primer 2) Smooth with Matt finish 3) Excellent adhesion and Sealing properties 4) Fungus and Bacteria resistant 5) Alkali resistance 6) Resistance to Chalking 7) Excellent Covering capacity 8) Easy application.

Thinner: Water Thinning Ratio : 40-50% By Volume Drying time : 3-4 Hours Spreading capacity: 80-90 sq.ft./liter/Coat.



TEXTURED FINISH

REAL TUFF GRANITE FINISH

Synthetic natural stone like spray finish based on pure Acrylic Emulsion reinforced by marble powder and quartz. It can be applied on prepaid masonry, concrete, plaster, gypsum and wood surfaces. It is formulated specially for use as a decorative and protective exterior coating. It also has 3 more variants namely TAJ WHITE, VICTORIA and RED GRANITE.

Features: 1) Durable and long lasting texture finish 2) Fungicide resistant 3) Bacteria resistant 4) Excellent adhesion 5) Water resistant 6) Easy application.

For a freshly plastered surface apply a coat of Granite texture by trowel as a base coat. Prior to application of second coat. put a masking tape on above the base coat to get desired brick pattern. Apply Granite texture by texture spray gun to get the desired brick pattern. Remove masking tape immediately in wet condition. Add 3-5% of water depending on the application required. Drying time is 16-18 hours before application of the topcoat. Spreading capacity 2.0-2.5 sq.ft./kg/2 coat.



REAL TUFF MARBLE FINISH

Synthetic natural stone like spray finish based on Pure Acrylic Emulsion reinforced by marble powder and quartz. It can be applied on prepared masonry, concrete, plaster, gypsum and wood surfaces. It is formulated specially for use as a decorative and protective exterior coating. It also has 3 more variants namely SINGLE TONE, DOUBLE TONE and METAL CLADDING.

Features: 1) Durable and long lasting texture finish 2) Fungicide resistant 3) Bacteria resistant 4) Excellent adhesion 5) Water resistant 6) Easy application.

For a freshly plastered surface apply a coat of Marble texture by trowel as a base coat. Prior to application of second coat, put the masking tape on above the base coat to get the desired marble pattern. Apply Marble texture by texture spray gun to get the desired marble pattern. Remove masking tape immediately in wet condition. Add 3-5% of water depending on the application required. Drying time is 16-18 hours before application of the topcoat. Spreading capacity 2.0-2.5 sq.ft./kg/2 coat.



TEXTURED FINISH

REAL TUFF TEXTURED FINISH

A decorative and protective exterior coating, this synthetic grooved finish is based on co-polymer emulsion reinforced by quartz aggregate. It may be applied on prepared masonry, concrete, plaster, gypsum and wood surfaces. It also has 3 more variants namely VERTICAL, CIRCULAR and ANGULAR.

Features: 1) Durable, long lasting finish 2) Resistant to humidity, rain and hot weather 3) Excellent adhesion 4) Fungus and bacteria resistant 5) Easy to apply 6) Water resistant

For a freshly plastered surface a apply a coat of Tuff Stuff finish by trowel and add 4-5% water into it depending on the application requirement. Allow the Tuff Stuff to dry for 16-18 hours.

Spreading Capacity: 2.0-2.5sq.ft./Kg/coat.



REAL TUFF ROLLER SPRAY

Co-polymer emulsion-based roller textured finish reinforced by marble powder. May be applied on prepared masonry, concrete, plaster, gypsum and wood surfaces. It is specially designed for use as a decorative and protective, exterior and interior coating. It also has 3 more variants namely FLEXAPPEAL, ROLLER FINE and ROLLER STUFF.

Features: 1) Durable, roller pattern textured finish 2) No cement content 3) No flaking or peeling 4) Resistant to humidity, rain and hot weather 5) Excellent adhesion 6) Fungus and bacteria resistant 7) Non-toxic and non flammable 8) Water resistant 9) Easy to apply

For a freshly plastered surface apply a coat of Roller Scape finish by trowel followed by a texture roller to get the desired texture. Add 3-5% water into it depending on the application requirement. Allow the Roller Scape to dry for 16-18 hours. Spreading Capacity : 3.0-4.0 sq.ft./kg,/coat.



REAL TUFF DHOLPUR STONE FINISH

This is an acrylic emulsion - based, synthetic natural stone finish reinforced with marble powder and silica sand. It can be applied on prepared masonry, concrete plaster, gypsum and wood surfaces. It is designed for use as a decorative and protective exterior coating. It also has 3 more variants namely GALATA, DOUBLE COLOR and STORM STONE.

Features: 1) Durable finish 2) Heritage stone effect 3) Excellent adhesion 4) Fungus and bacteria resistant 5) Water resistant 6) Easy application

For freshly plastered surface apply a coat of Stone Face by a trowel as a base coat. Prior to application of second coat, put the masking tape on above the base coat to get the desired brick/stone pattern. Apply Stone Face texture by trowel to get stone effect. Remove masking tape immediately in wet condition. Add 3-5% water depending on the application requirement. Allow the Stone Face texture to dry for 16-18 hours prior to application of another coat. Spreading capacity: 2.0-2.5 sq.ft./kg/two coats.



REAL TUFF BUBBLE SPRAY

Co-polymer emulsion based exterior texture finish reinforced by marble powder. It can be applied on prepared masonry, concrete, plaster, gypsum and wood surfaces. It is formulated specially for use as a decorative and protective exterior and interior coating. It also has 3 more variants namely PRESSED, SHANGRILLA and Multi-color.

Features: 1) Durable and long lasting texture finish 2) Texture spray by texture spray gun to get the desire bubble texture. (In case of pressed bubble finished, press the bubble gently with a metal trowel after 5-10 mins of surface drying). Add 3-5% of water depending on the application required. Drying time is 16-18 hours. Spreading capacity : 5-6sq.ft./kg/coat.



REAL PLAST WALL CEMENT PUTTY

REAL PLAST WALL CEMENT PUTTY

REAL Plast Cement Wall Putty is based on white cement with re dispersible polymer & special additives. It provides smooth & uniform finish to rough plasters. Formulated specially for use a putty/filler to fill unevenness upto 2mm. dents, fine cracks & level the interior / exterior surface. It provides strong, durable foundation. This improves finish paint performance further.

Features:1) Smooth durable interior / exterior wall putty 2) Good Workability 3) Does not require curing with water 4) Excellent whiteness 5) Good Water resistant 6) Good Adhesion strength 7) Good Abrasion resistance 8) Good intercoat adhesion with emulsion paint 9) Controlled water vapor permeability

Thinner : Water Thinning Ratio: 35-45% By Weight Drying time : 8-10 hours Spreading capacity: 7-10 sq.ft./kg/mm • It depends on thickness of putty application. • On rough massonary surface by putty knife. • For better results, pre wet the surface prior to application on Real Plast Cement Putty. Pot Life:3-4 hours.



REAL PLAST CEMENT COARSE PUTTY

REAL Plast Cement Corse Putty is based on white cement with re dispersible polymer & special additives. It provides smooth & uniform finish to rough plasters. Formulated specially for use a putty/filler to fill unevenness upto 2mm. dents, fine cracks & level the interior / exterior surface. It provides strong, durable foundation. This improves finish paint performance further.

Features:1) Smooth durable interior / exterior wall putty 2) Good Workability 3) Does not require curing with water 4) Excellent whiteness 5) Good Water resistant 6) Good Adhesion strength 7) Good Abrasion resistance 8) Good intercoat adhesion with emulsion paint 9) Controlled water vapor permeability

Thinner : Water Thinning Ratio: 35-45% By Weight Drying time : 8-10 hours Spreading capacity: 7-10 sq.ft./kg/mm • It depends on thickness of putty application. • On rough massonary surface by putty knife. • For better results, pre wet the surface prior to application on Real Plast Cement Putty. Pot Life:3-4 hours.



REAL PLAST ACRYLIC PASTE PUTTY

Real Plast Acrylic Paste Putty is a PVA co-polymer based interior water based wall putty. Formulated specially for us as putty/filler to fill unevenness, dents, fine cracks & level the surface. It provides strong, durable foundation. This improves finish paint performance further.

Features: 1) Smooth interior ready-to-use wall putty 2) Strong foundation on wall surface 3) Better whiteness 4) Quick drying with less porosity 5) Good Alkali resistant 6) Easy application

Thinner: Water Thinning Ratio: Ready to use /3-5% By Weight Drying time: 6-8 hours Spreading capacity : 10-12sq.ft./Kg/Coat • It depends on thickness of putty applications. • On smooth & even prime masonry surface by putty knife.



REAL PLAST ACRYLIC POWDER PUTTY

Real Plast Acrylic Powder Putty is a PVA co-polymer based interior water based wall putty. Formulated specially for us as putty/filler to fill unevenness, dents, fine cracks & level the surface. It provides strong, durable foundation. This improves finish paint performance further.

Features: 1) Smooth interior ready-to-use wall putty 2) Strong foundation on wall surface 3) Better whiteness 4) Quick drying with less porosity 5) Good Alkali resistant 6) Easy application

Thinner: Water Thinning Ratio: Ready to use /3-5% By Weight Drying time: 6-8 hours Spreading capacity : 10-12sq.ft./Kg/Coat • It depends on thickness of putty applications. • On smooth & even prime masonry surface by putty knife.





SHWETA PAINTS

On-Time In Budget. Guaranteed To Last.

 Gala No. 11/A, S. No. 283 / 2P, Richard Industrial Estate, Pelhar,
Vasai Phata, Vasai (E), Dist.: Palghar - 401208. MAHARASHTRA

 shwetapaints786@gmail.com

 Mr. Devnath Gupta : 8177864815

 CUSTOMER CARE NO.: 8983448818